

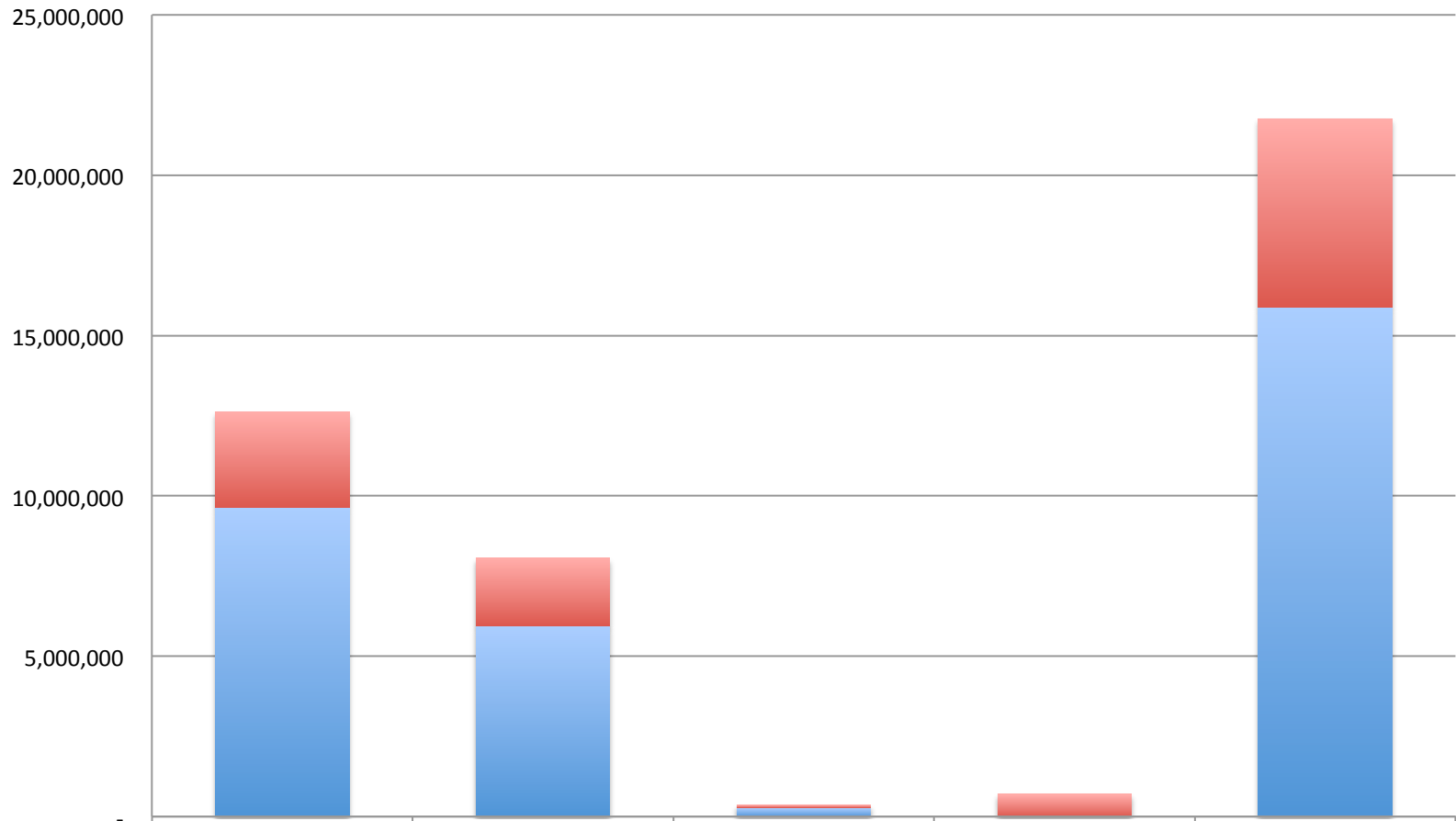
Estacada School District  
Board of Directors

# Financial Report

December 14, 2011

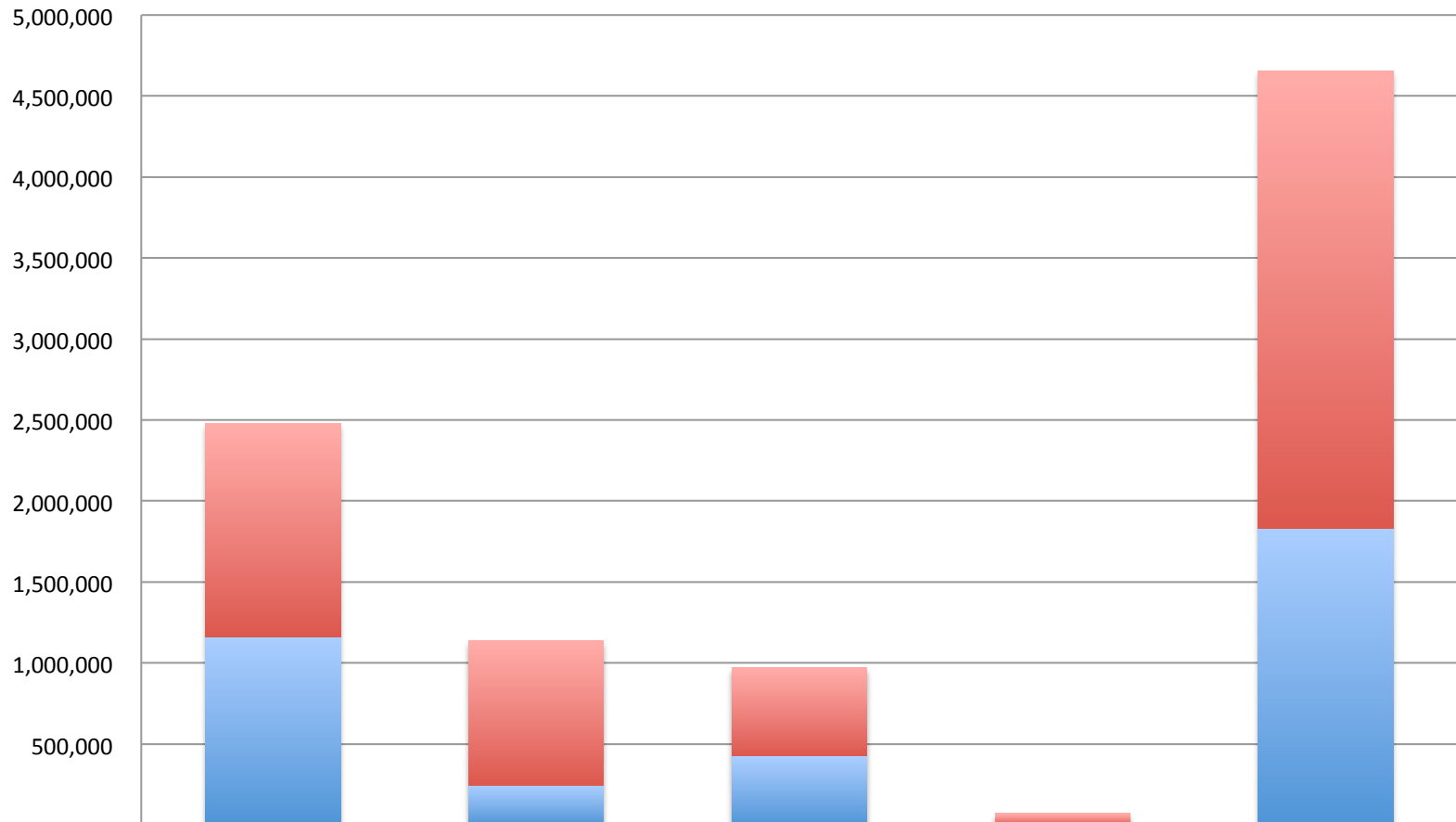


## General Fund FY 11 12 As of October 31, 2011



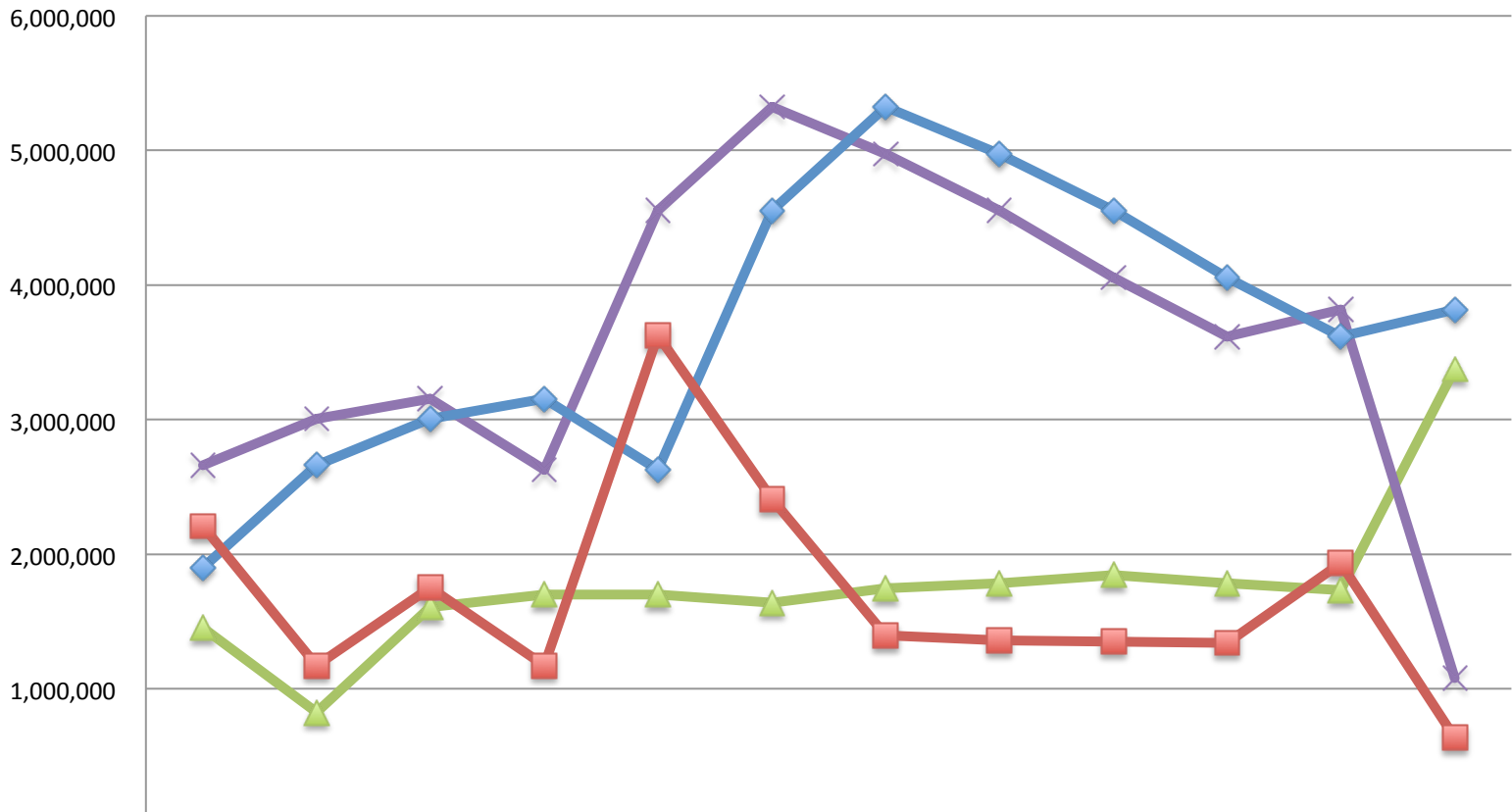
	TOTAL INSTRUCTION	TOTAL SUPPORT SERVICES	TOTAL TRANSFER OF FUNDS	TOTAL CONTINGENCY	TOTAL GENERAL FUND
TOTAL UNCOMMITTED	2,983,576	2,111,249	84,358	700,000	5,879,183
TOTAL COMMITTED	9,636,146	5,950,356	288,677	-	15,875,179

## Special Revenue Fund FY 11 12 As of October 31, 2011



	TOTAL INSTRUCTION	TOTAL SUPPORT SERVICES	TOTAL ENTERPRISE SERVICES	TOTAL OTHER USES	TOTAL SPECIAL REVENUE FUNDS
TOTAL UNCOMMITTED	1,317,417	890,231	546,602	70,000	2,824,250
TOTAL COMMITTED	1,160,290	245,853	425,111	-	1,831,254

## Cash Flow Projection FY 11 12 Actual Through October



	Actual July	Actual August	Actual September	Actual October	Projected November	Projected December	Projected January	Projected February	Projected March	Projected April	Projected May	Projected June
<span style="color: green;">▲</span> TOTAL EXPENDITURES	1,451,527	825,367	1,606,611	1,699,227	1,699,697	1,640,851	1,746,573	1,782,578	1,846,637	1,782,900	1,734,254	3,375,747
<span style="color: purple;">✕</span> ENDING FUND BALANCE	2,658,662	3,007,640	3,153,464	2,627,617	4,556,430	5,325,960	4,975,718	4,552,762	4,056,292	3,615,975	3,816,979	1,079,053
<span style="color: blue;">◆</span> BEGINNING FUND BALANCE	1,900,000	2,658,662	3,007,640	3,153,464	2,627,617	4,556,430	5,325,960	4,975,718	4,552,762	4,056,292	3,615,975	3,816,979
<span style="color: red;">■</span> TOTAL RESOURCES	2,210,188	1,174,346	1,752,435	1,173,379	3,628,510	2,410,380	1,396,332	1,359,622	1,350,167	1,342,583	1,935,258	637,822